



Elected Officers' Roles



The Students' Union officers are the bridge between students and the university.

This schedule outlines the duties of each elected officer, ensuring every part of the student experience has a dedicated champion.

These roles are designed to be dynamic and evolve based on the needs of you, our members.

Your officer team

Sabbatical Officers (the strategic core)

Full-time, paid officers who provide strategic and political leadership

- Union President
- VP Education
- VP Communities
- Sports Union President

Voluntary officers

Part-time officers who ensure specific student communities and interests are represented

- Equalities Officers
- Campaign Officers
- Postgraduate Officers

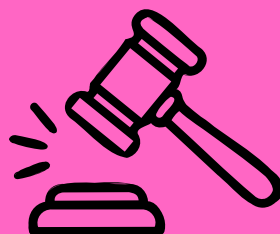


What are the core responsibilities of a Full-time officer

All four Sabbatical Officers act as trustees of the Union and share a set of fundamental duties:

Trusteeship

Act as a trustee: overseeing finances, managing risk, and ensuring the union's long-term viability.



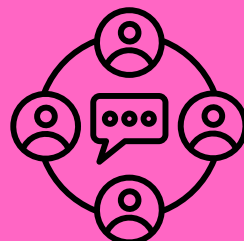
Leadership

Provide political leadership and represent student interests to the University and external bodies.



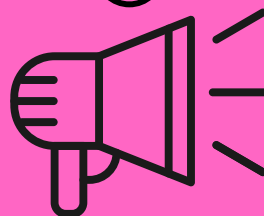
Engagement

Constantly engage with students to understand and champion their needs.



Campaigning

Campaign to improve the student experience for all students at Stirling.



Compliance

Ensure the Union complies with the Education Act 1994 and all relevant policies.



Salary: £25,253.76



The Union President

The Union's principal ambassador, spokesperson, and champion for inclusion.

Key remit:

- **Lead Representative:** act as the overall spokesperson to the University, media, and external bodies.
- **Community Liaison:** Maintain close links with local and national communities on issues of mutual concern.
- **Inclusion Champion:** Ensure the implementation of an effective Equality, Diversity, and Inclusion (EDI) policy, making all services accessible.
- **Officer support:** Serve as the main point of contact and support for Equalities and Campaign Officers.

The Vice-President Education

Your dedicated champion for all academic matters, from teaching quality to student representation.

Key remit:

- **Academic Representation:** Represent students on all academic matters to the university
- **Policy Leadership:** Lead the development and implementation of Union Policy on education.
- **Campaign Driver:** Plan and implement campaigns to better the academic experience
- **Rep network development:** Develop and support an effective student academic representative network.
- **Quality Enhancement:** Engage, empower, and campaign to enhance the quality of teaching and learning.



The Vice-President Communities

The driving force behind student societies, volunteering, and campus sustainability.

Key remit:

- **Societies Lead:** Act as the lead officer for societies, providing support, development, and guidance.
- **Volunteer Champion:** Ensure an effective strategy for the recruitment, retention, and recognition of student volunteers.
- **Student Development:** Champion the personal and professional development of students to enhance employability and civic engagement.
- **Sustainability Lead:** Take the policy lead and formulate strategy on sustainability-related matters.

Sports Union President

The voice for sport, from widening participation to competitive excellence.

Key remit:

- **Sporting Representation:** Represent the sporting interests of students to the University and external bodies.
- **Participation & Inclusion:** Encourage and coordinate student participation in sport, focusing on widening access.
- **Club Development:** Develop, support, and guide sports clubs to ensure their continual growth.
- **Strategic Planning:** Ensure the implementation of the strategic plan for sport.
- **Partnerships & Events:** Attract sporting events and develop innovative partnerships with key organisations.



Your Voluntary Officers

Voluntary Officers are unpaid, **part-time roles** that exist to ensure all students can feed into and deliver on the work of the union. They **represent specific areas of interest or perspectives.**

1. **Equalities Officers**
2. **Campaign Officers**
3. **Postgraduate Officers**

Equalities Officers: Championing Marginalised Students

Core Remit

- **Represent:** Attend Student Council to ensure the perspectives of marginalised students are heard in decisions.
- **Engage:** Facilitate meetings and forums to discuss issues affecting their community.
- **Communicate:** Gather and communicate the views and concerns of their community to inform Union decision-making.
- **Lead:** Lead and support campaigns and initiatives to improve their community's student experience.

The Positions

- BAME Students
- Disabled Students
- Gender Identity
- Sexual Identity
- Women Students

Key fact: Positions are selected by members of the relevant student groups.



Campaign Officers: Driving change on key student issues

Core Remit

- **Influence:** Attend the Student Council to ensure their areas of interest are given attention.
- **Mobilise:** Gather student views through forums to plan campaign activity.
- **Advocate:** Communicate concerns to inform Union campaign planning.
- **Activate:** Lead and support initiatives to make positive change in their area.

Initial Designated positions

- Housing
- Transport
- Sustainability
- International Students
- Four open remit

Key fact: These officers are elected by the entire student body in the Spring Elections.



Postgraduate officers: A voice for taught and research students

Core Remit

- **Campaign:** Identify and organise campaigns on issues affecting postgraduate students.
- **Collaborate:** Work alongside the VP Education to represent Postgraduates and build an active community.
- **Participate:** Sit as members of both the Education Executive Committee and the Student Council.

The two roles

- Postgraduate Taught (PGT) Representative
- Postgraduate Research (PGR) Representative

Key fact: Elected in the Autumn Elections. Candidates must be enrolled in the corresponding programme (PGT or PGR) to be eligible.